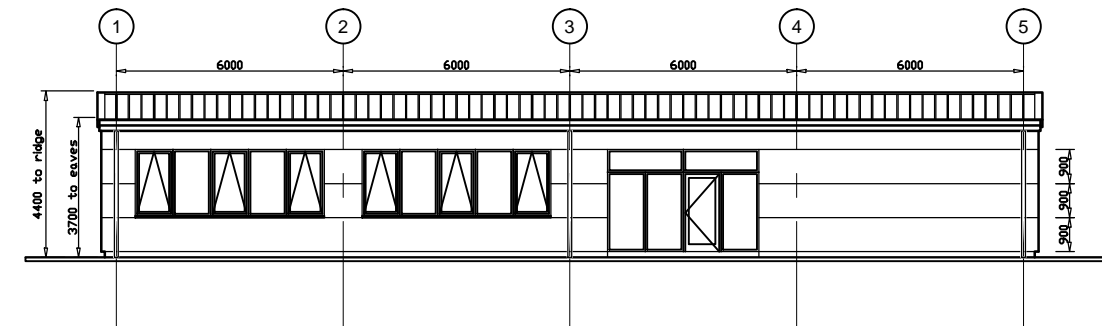
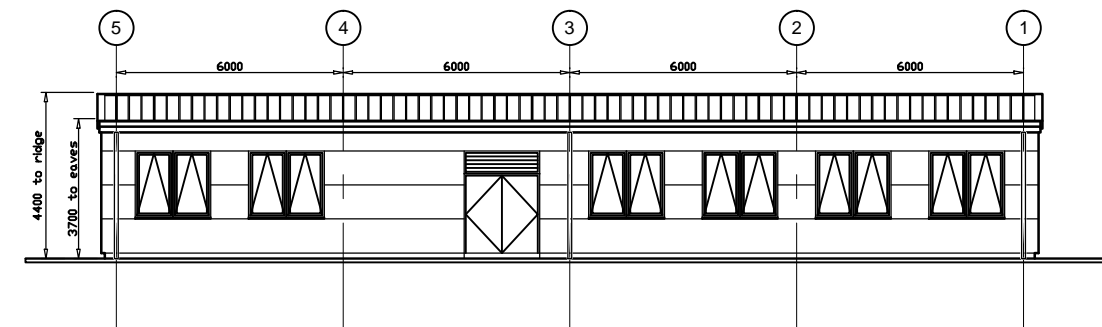


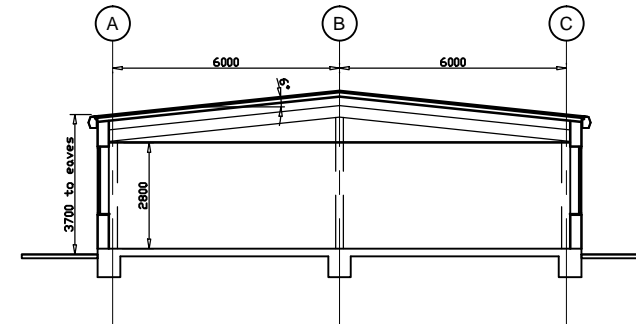
PLAN



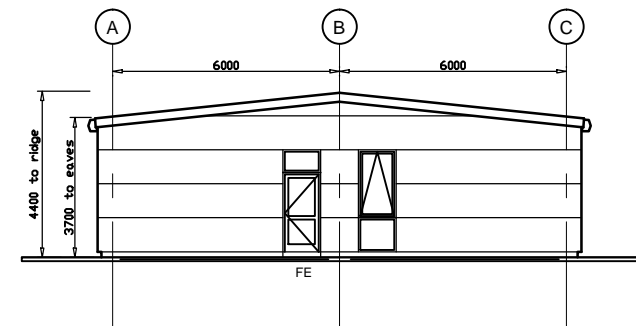
SOUTH ELEVATION



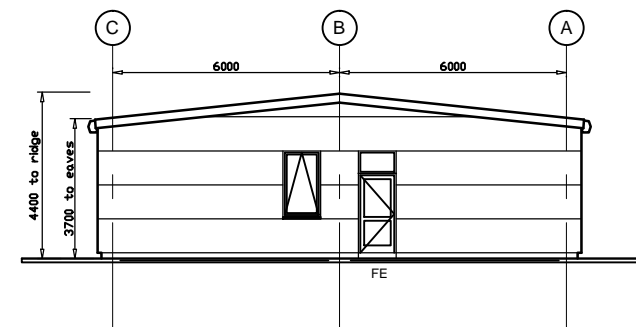
NORTH ELEVATION



TYPICAL CROSS SECTION



WEST ELEVATION



EAST ELEVATION

NOTES

Roof Cladding
Kingspan composite trapezoidal insulated panels type KS100RW, pitch 6 degrees.
Colour Goosewing Grey BS 10A05

Rainwater Goods
Box gutter and rainwater pipes to be pre-formed HPS200 Ultra colour coated steel.
Colour Anthracite Grey RAL 7016

Wall Cladding
Kingspan composite microrib insulated architectural panel cladding system type KS300MR, horizontally laid.
Colour Silver RAL 9006

Windows
Aluminium framed, polyester powder coated, proprietary thermally broken system, to integrate and fit flush with wall cladding system.
Clear double glazed units with top hung, outward opening lights as shown, for natural ventilation.
Colour Anthracite Grey RAL 7016

Entrance Screen and door
Aluminium framed, polyester powder coated, proprietary full glazed screen, door and fanlights above with clear double glazed units.
Colour Anthracite Grey RAL 7016

Personnel, fire exit doors
Aluminium framed, polyester powder coated, proprietary glazed doors and fanlight with clear double glazed units.
Colour Anthracite Grey RAL 7016

Plant room doors
Aluminium framed, polyester powder coated, plain doors and louvres above. Louvres in flush alignment with doors.
Colour Anthracite Grey RAL 7016

FOR PERMANENT COMPOUND LAYOUT AND LOCATION OF GENERAL SERVICES BUILDING REFER TO PB1586-SK1027

REV	DATE	DESCRIPTION	BY	CHK	APP
C	11.03.15	MINOR REVISIONS	LW	DGB	MH
B	09.03.15	ISSUED FOR INFORMATION	TF	DGB	MH
A	20.02.15	ISSUED FOR INFORMATION	LW	DGB	MH

REVISIONS

PROJECT
YORK POTASH

TITLE
THE YORK POTASH HARBOUR FACILITIES ORDER 201X PERMANENT BUILDING ELEVATIONS SITE C REGULATIONS 5 (2)(c) DOCUMENT 3.6A

HASKONINGDHV UK LTD
MARITIME & WATERWAYS
Marborough House
Newcastle upon Tyne NE1 4EE
+44 (0) 191 211 1300 Telephone
+44 (0) 191 211 1313 Fax
info@haskoningdhv.com E-mail
www.haskoningdhv.com Internet

DRAWN	LW	CHECKED	DGB	PASSED	MH
DATE	FEB'15	CLIENT'S REF.			
SCALE AT A3	1:200	AUTOCAD REF.	PB1586-SK1028		

DRAWING No. **PB1586-SK1028** REVISION **C**